

KerioMailServer6™

Kerio 4D Migration

Kerio Technologies

© 1997-2006 Kerio Technologies. All rights reserved.

Release Date: February 28, 2006

This document provides brief instructions on how to migrate data from the *4D Mail* server to *Kerio MailServer*.

For current product version, check <http://www.kerio.com/>.

Contents

- 1 Introduction 4**
 - 1.1 System Requirements 4

- 2 Migration process description 5**
 - 2.1 Migrated data 5

- 3 Conditions for successful migrations 7**
 - 3.1 Problems 7

- 4 Kerio 4D Migration Wizard 8**

- 5 Kerio 4D Migration Tool 16**
 - 5.1 Usage example 17

Chapter 1

Introduction

This document provides brief instructions on how to migrate data from the *4D Mail* server to *Kerio MailServer*.

For simple migration from 4D, go to <http://www.kerio.com/> and download an image including the *Kerio 4D Migration Wizard* migration tool and the 4d2kms command line migration utility. You can also download this document in PDF.

1.1 System Requirements

The migration tools are supported on the following operating systems:

- Mac OS X 10.3 Panther
- Mac OS X 10.4 Tiger

It is possible to migrate from *4D WebSTAR 5.4.x* to *KMS 6.1.2* or higher.

Chapter 2

Migration process description

Migration tools enable migration of data stored at the *4D Mailbox* server. The migration covers domains, user accounts and data available through IMAP (e-mail and folders).

First, the migration tool locates *4D Mailbox* server's configuration in the default or a specified path. Then, it attempts to connect to the IMAP port at the local host and to login to *Kerio MailServer* using an administration account. If all these attempts are completed successfully, the migration process can start.

2.1 Migrated data

Post Offices

On the *4D Mail*, data is stored in *Post Office*. Each *Post Office* on the 4D server covers one or multiple SMTP domains. Migration tools create one domain in *Kerio MailServer* for each *Post Office*. The domain name will match with the first SMTP domain detected in the migrated *Post Office* (the first domain name found in the configuration for this *Post Office*).

The other Local Mail Domains associated with the migrated *Post Office* will be added to *Kerio MailServer* as aliases to the created SMTP domain. If the SMTP domain already exists in *Kerio MailServer*, it will not be modified and it will be skipped. If there already exists a domain matching a migrated domain or an alias to an existing domain, migration of such a domain fails.

Users accounts

Migration tools create a *Kerio MailServer* account for each user migrated. For new accounts, the password identical with passwords at *4D Mail* will be set. For a successful migration, migrated users need a valid password and it is also necessary that login to the IMAP service is enabled.

Folders and e-mail messages

Migration tools make copy of all data available via the IMAP protocol. All folders and e-mail messages are copied. Any data saved in *4D WebMail* which are not accessible via the IMAP protocol will be left out of the migration.

Chapter 3

Conditions for successful migrations

- Migration tools must run on a host where *4D WebSTAR* is installed. The tool locates *4D Mailbox* server's configuration from the local file system and, therefore, it is necessary that it is used by a user with full access to the configuration.
- Configuration files for all *Post Offices* are tested before the migration process starts. It is necessary that no configuration file is damaged or missing. Otherwise, an information will be displayed that the migration cannot be performed since the *4D Mail* configuration cannot be located and the wizard exits.
- It is necessary that the IMAP service is running at the *4D Mail*.
- It is necessary that users can login to the IMAP server and use a valid password for it.
- Users with the password missing will not be migrated since they cannot be authenticated at the source IMAP server.
- *Kerio MailServer* must be installed and running on the same computer as *4D WebSTAR* or on a host which is accessible via network. If a firewall is running on the *Kerio MailServers* host, it is necessary to allow incoming connections on ports 44337 and 8143.
- In *Kerio MailServer*, an administration account must be created during the installation.
- Also a primary domain must be created in *Kerio MailServer* that does not exist in *4D Mail* server. This measure will help avoid possible duplicities.

3.1 Problems

If duplicate *Post Offices* or SMTP domains exist on *4D Mail* server, migration-related problems may arise.

Chapter 4

Kerio 4D Migration Wizard

Step-by-step instructions:

1. Make sure that *Kerio 4D Migration Wizard* is installed on the computer where the *4D Mail* server is running and that the IMAP service is also running at the server.
2. Install *Kerio MailServer* on the same computer or on a host accessible via a network interface. During the installation, create a primary domain and an administrators account. The primary domain should not be equal to any of the SMTP domains at the *4D Mail* server.
3. The migration tool will migrate all users from *4D Mail* to *Kerio MailServer*. Check that users are allowed to login and they have valid passwords. Users with login disabled or without valid passwords will not be migrated.
4. Run *Kerio 4D Migration Wizard*. You will be asked to enter the administrators password since rights for administration of the operating system are required for the migration process.

5. The migration tool is now running.

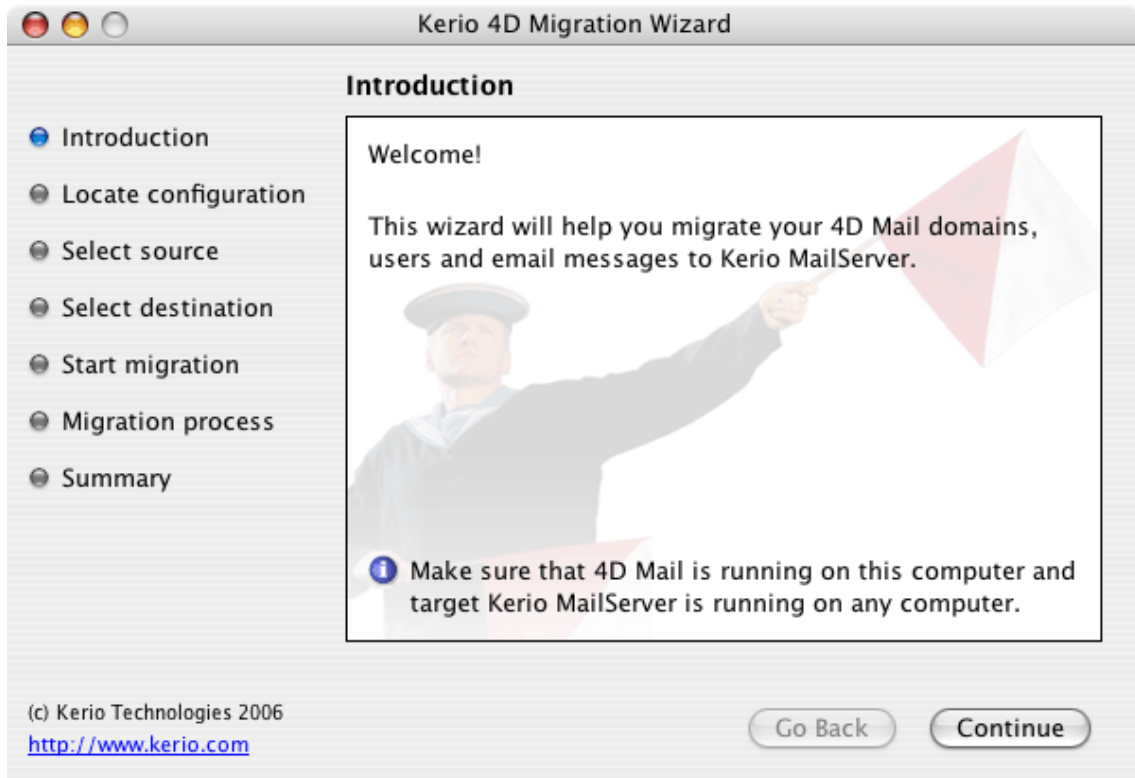
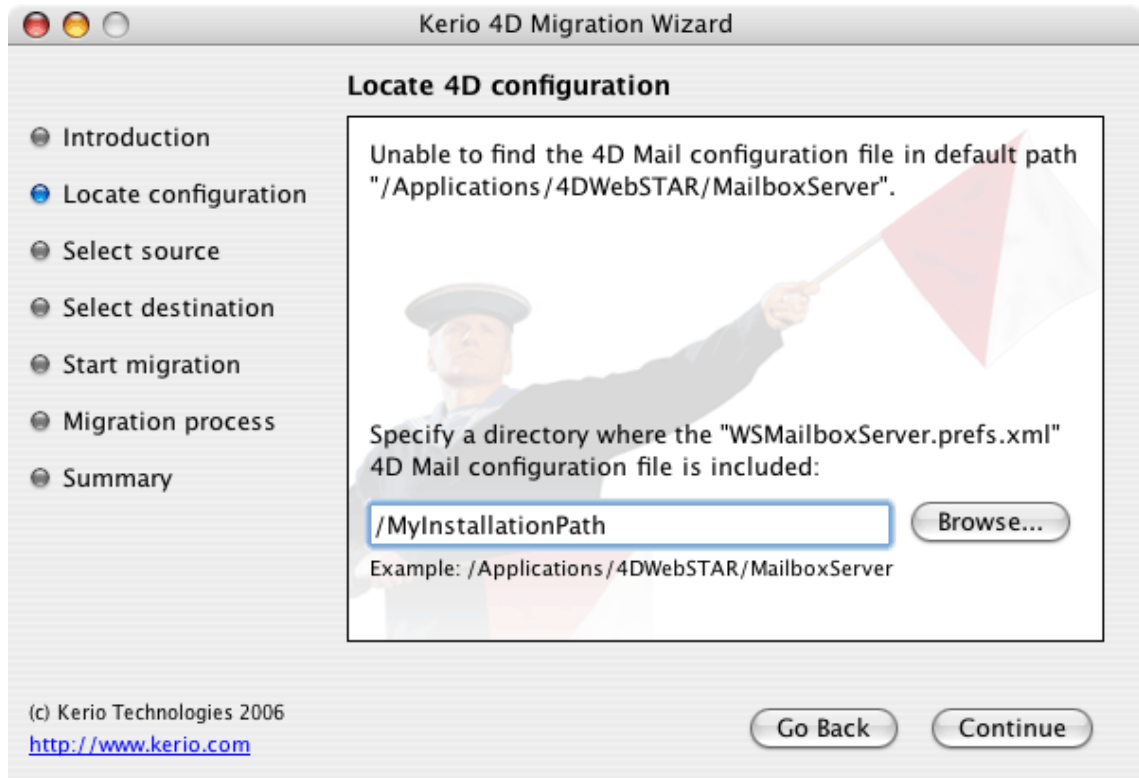


Figure 4.1 Introduction

6. Click on *Continue* to make the migration tool locate the configuration at the `WSMailboxServer.prefs.xml` file in the default path `/Applications/4DWebSTAR/MailboxServer`. If this file cannot be located, you will be asked to enter a correct path to the file. If the configuration is located automatically, the page shown at figure 4.2 is skipped.



- Now, the migration wizard attempts to connect to the IMAP service at the local hosts default port 143. If the connection fails, check whether the IMAP service of the *4D Mail* is running on the computer. If not, go to the migration tool and define the port where the IMAP service is running.

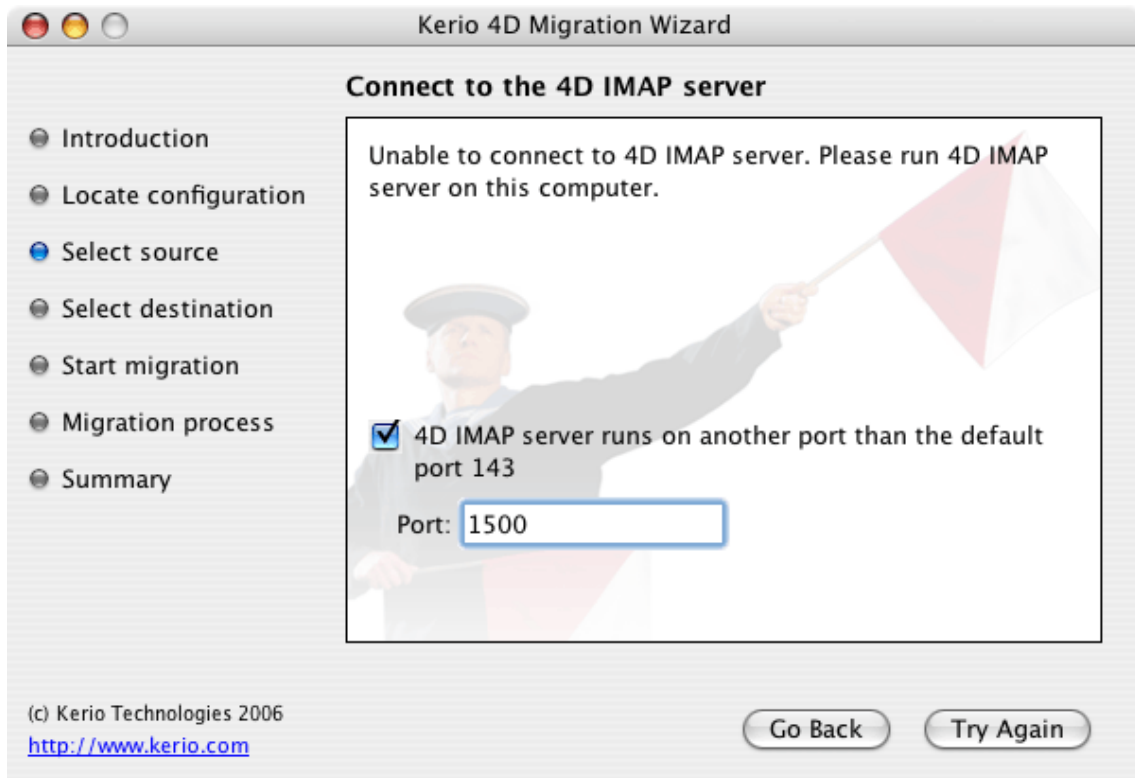


Figure 4.3 Connect to the 4D IMAP server

8. On the following page, specify the IP address of the host where your *Kerio MailServer* is installed. Also authenticate by username and password of the administration account set during the *Kerio MailServer* installation.

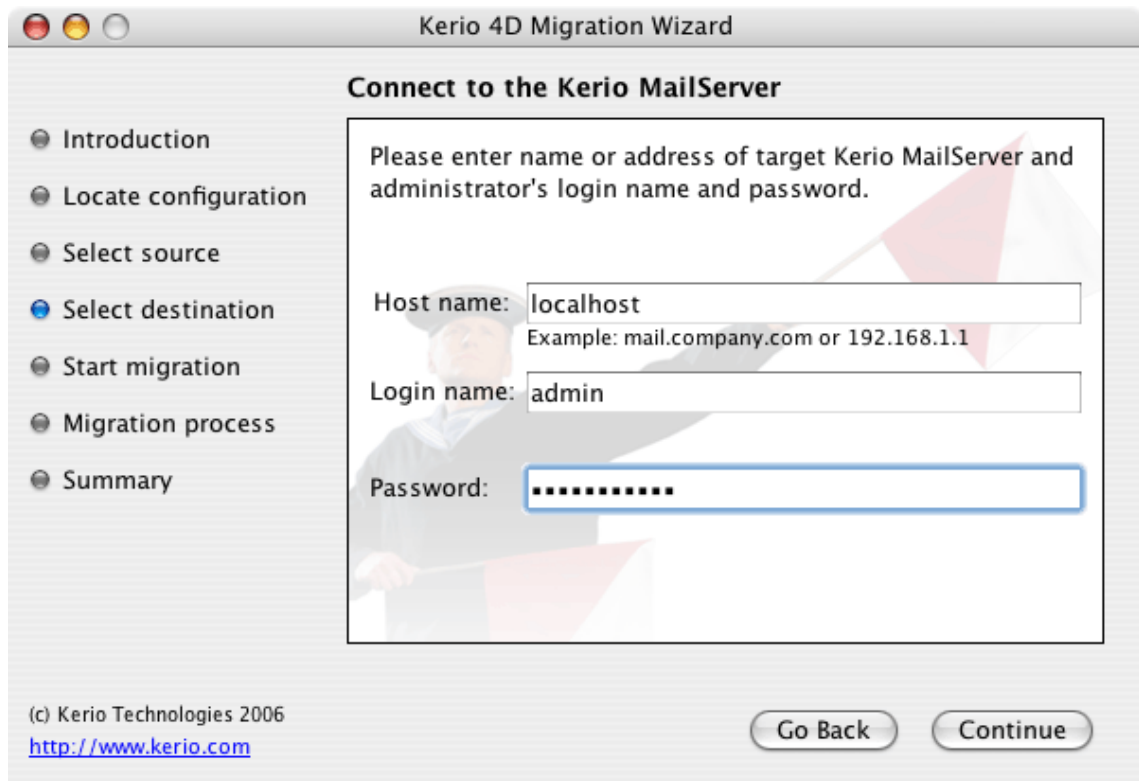


Figure 4.4 Connect to the Kerio MailServer

9. The next page provides summary about the configuration located. Click *Start* to launch the migration process. The process can take some time.

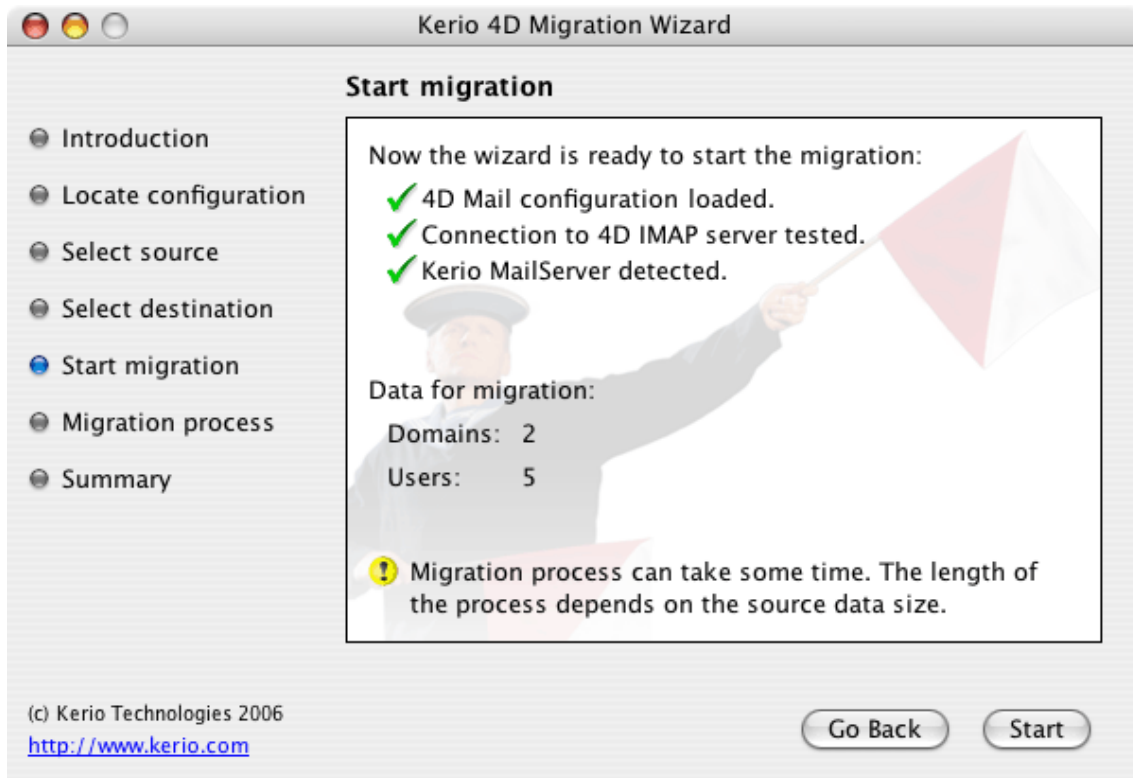


Figure 4.5 Start migration

10. Now, the migration process is in progress. The page enables to view its status. The process can be stopped by the *Abort* button if desired.

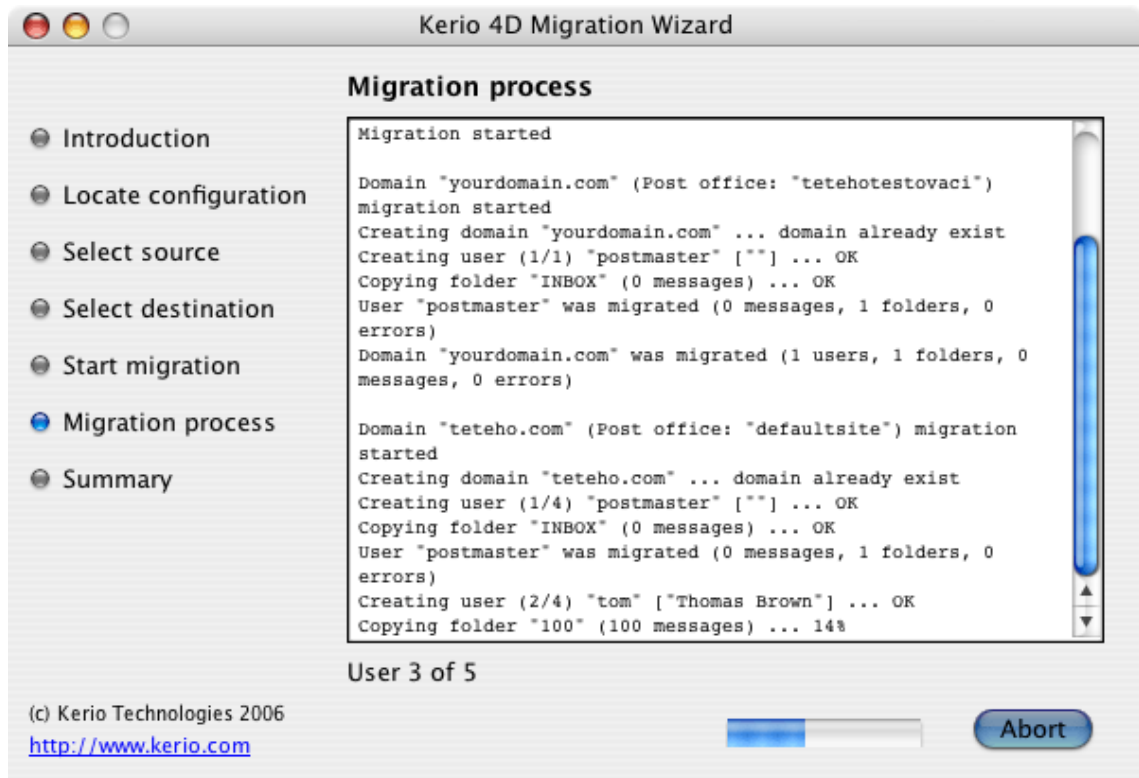


Figure 4.6 Migration process

11. When the migrations completed, another page is displayed providing results of the migration process.

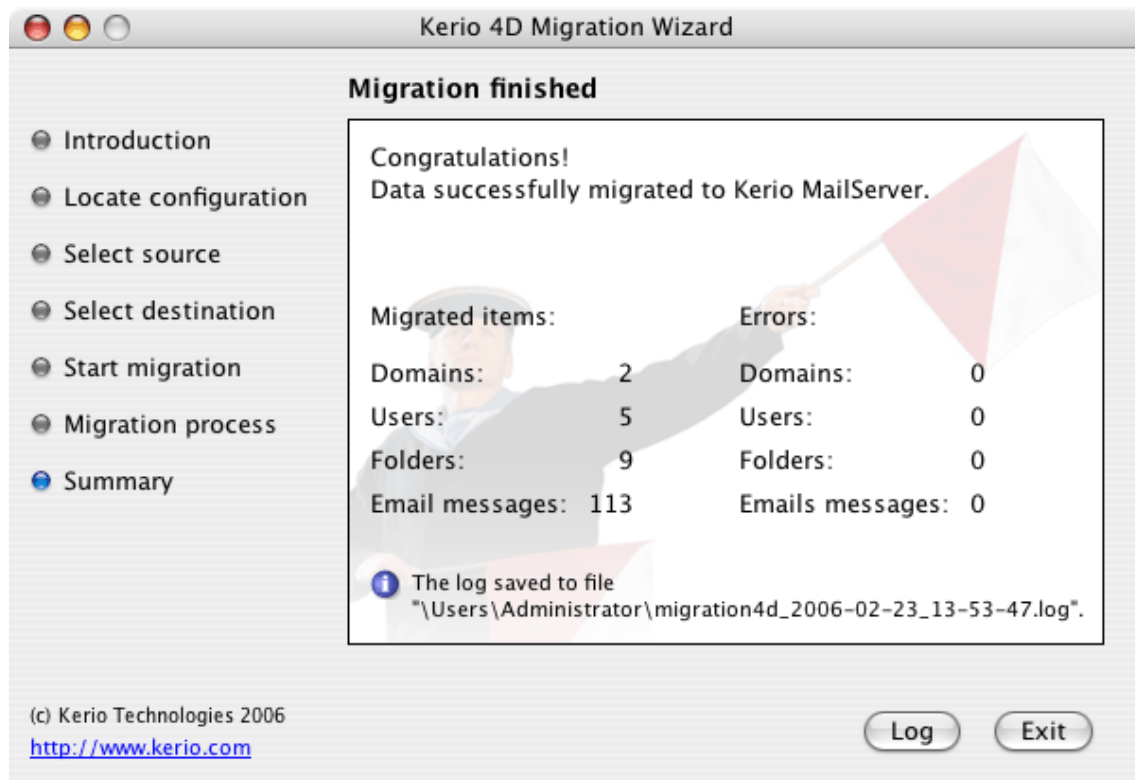


Figure 4.7 Migration finished

Chapter 5

Kerio 4D Migration Tool

Although it is recommended to perform the migration using the wizard, a simple command-line utility is also available. The tool is the `4d2kms` command line utility. It is necessary that the utility is run by a user with valid access to the *4D Mailbox* servers configuration. If the utility is started with parameters missing, the following brief instructions appear.

```
Kerio 4D Migration Tool 6.1.3.  
Copyright (C) 2006 Kerio Technologies. All rights reserved.  
Usage: 4d2kms [--target-host HOST] --target-user USER  
--target-pass PASSWORD [--source-host HOST] [--source-path PATH]  
[--source-port PORT] --quiet --help
```

Options:

<code>--target-user USER</code>	Username of administrative account on KMS. This parameter is required.
<code>--target-pass PASSWORD</code>	Password of administrative account on KMS. This parameter is required.
<code>--target-host HOST</code>	Name or IP address of target KMS. Default value is 'localhost'.
<code>--source-path PATH</code>	path in localhost filesystem where 4D WebSTAR is installed. Default value is '/Applications/4DWebSTAR/MailboxServer'
<code>--source-port PORT</code>	Imap server port of 4DWebSTAR server. Default value is 143.
<code>--quiet</code>	Quiet mode.
<code>--help</code>	Display this information.

5.1 Usage example

4dkms is started on a computer with *4D WebSTAR*. On the same computer, *Kerio MailServer* is also installed where the *admin* administration account with the *abcd* password is created.

The command line will be as follows:

```
sudo ./4d2kms --target-user admin --target-pass abcd
```

